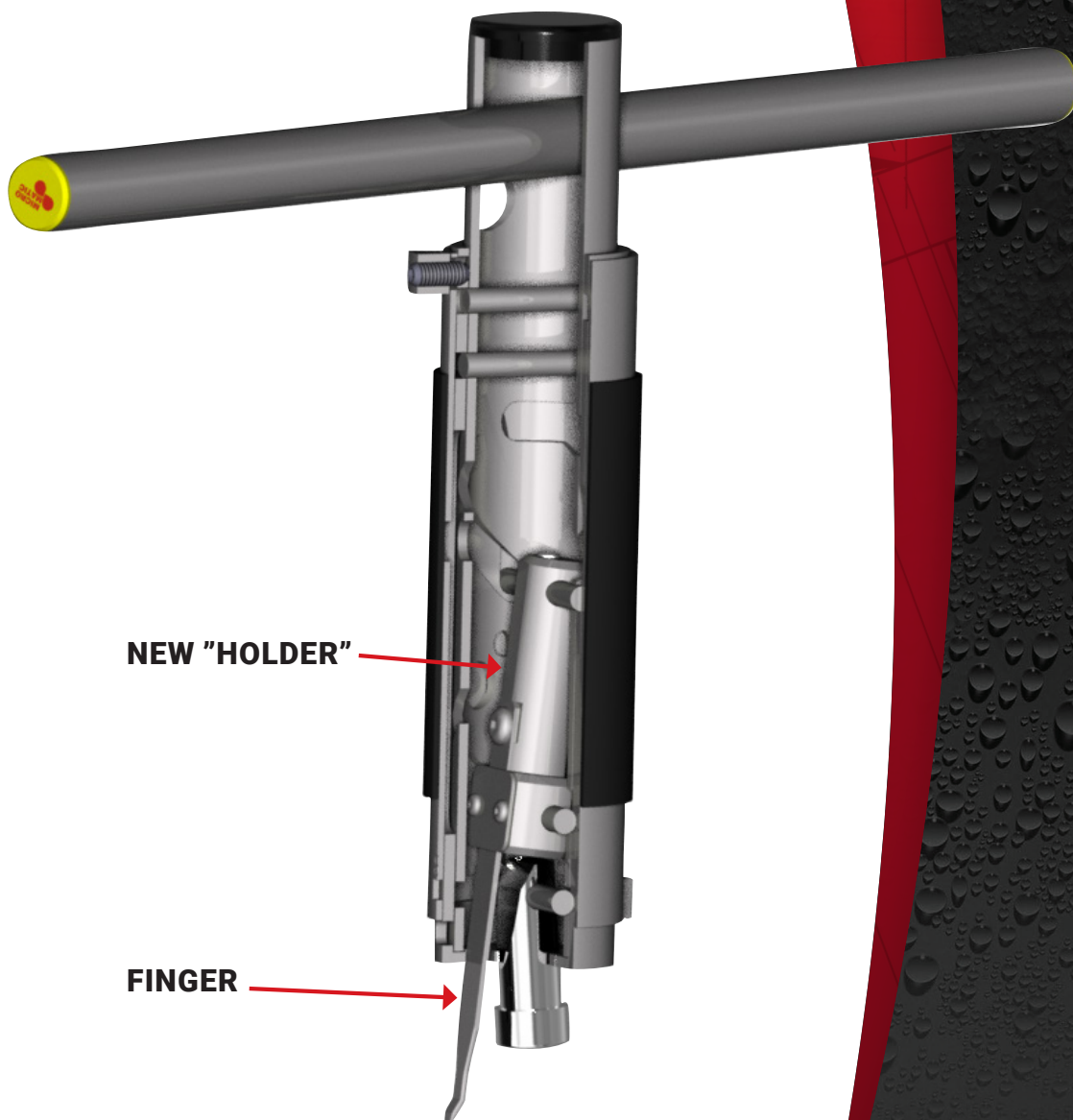


REPLACEMENT OF HOLDER AND
FINGER FOR TOOL NO. 941-094

HOLDER/FINGER FOR 941-094



NEW "HOLDER"

FINGER

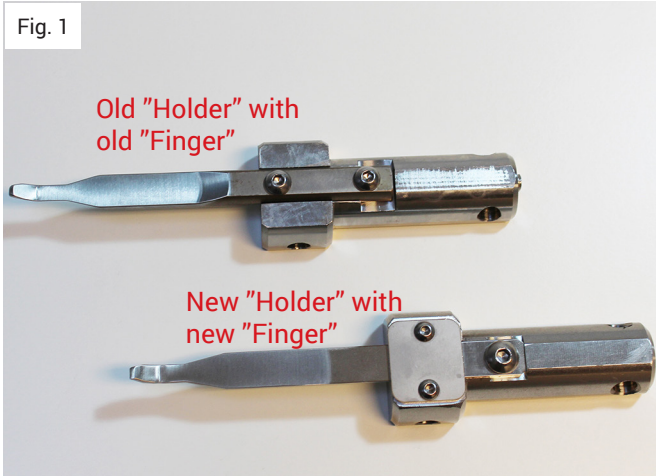


DEDICATED TO
DRAFT QUALITY

FOR TOOL 941-094

HOLDER AND FINGER

REPLACEMENT OF "HOLDER AND FINGER"



Release the set screw.



Pull off the outer tube.

FOR TOOL 941-094

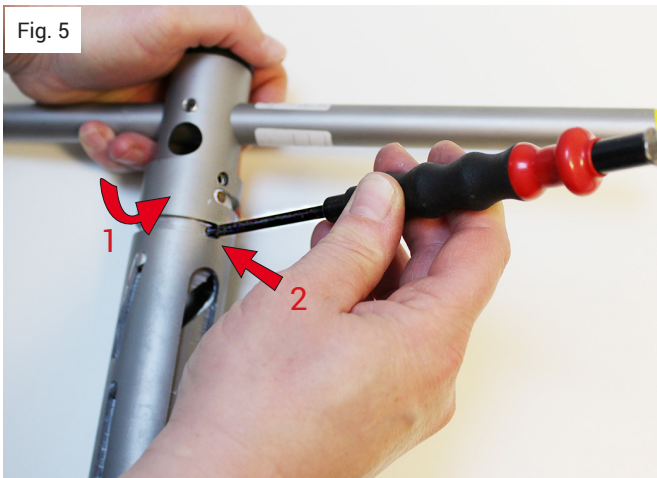
HOLDER AND FINGER

Fig. 4



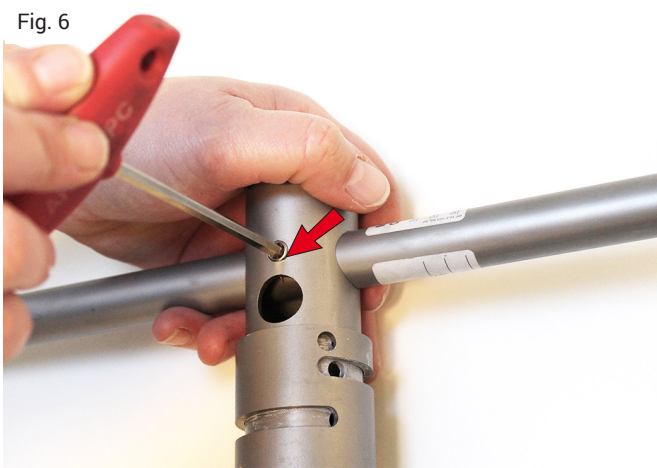
Remove the 1st pin.

Fig. 5



Turn the tool 180° and remove the 2nd pin.

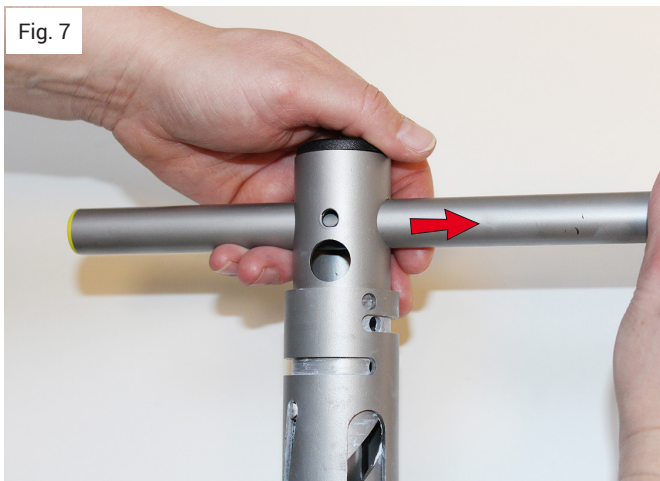
Fig. 6



Release the set screw.

FOR TOOL 941-094

HOLDER AND FINGER



Pull out the handle bar.



Remove the plastic plug.



Release the set screw.

FOR TOOL 941-094

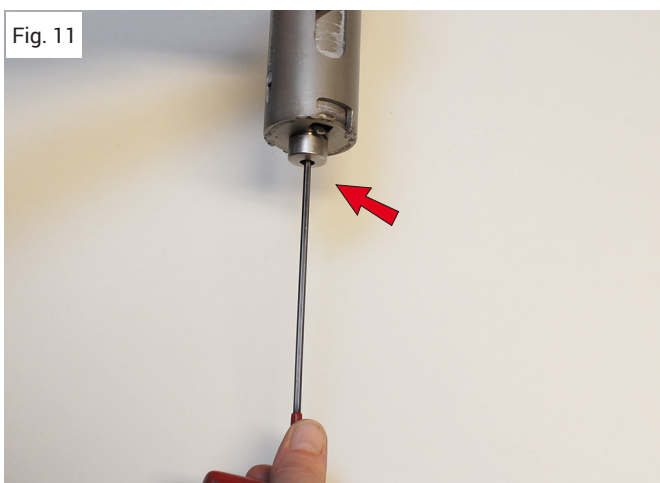
HOLDER AND FINGER

Fig. 10



Pull out the 3rd pin.

Fig. 11



Release the set screw for venting tap.

Fig. 12



Release the venting tap.

FOR TOOL 941-094

HOLDER AND FINGER

Fig. 13



Pull out the 4th pin.

Fig. 14



Release the set screw.

Fig. 15

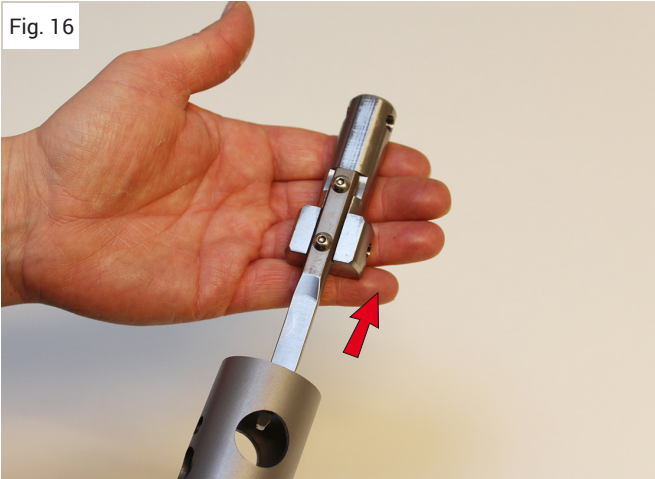


Remove the 5th pin.

FOR TOOL 941-094

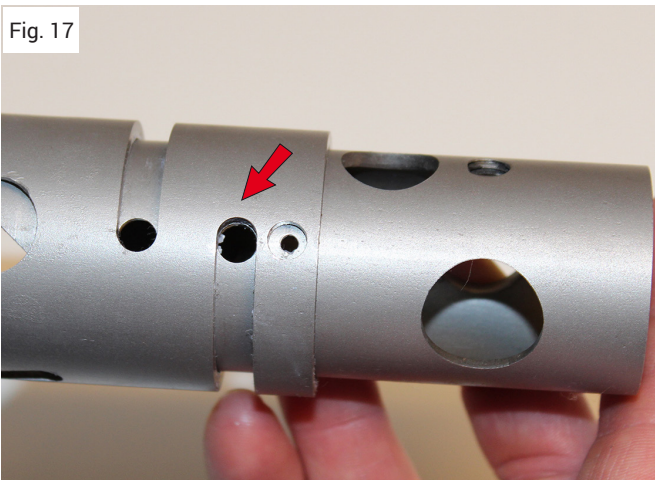
HOLDER AND FINGER

Fig. 16



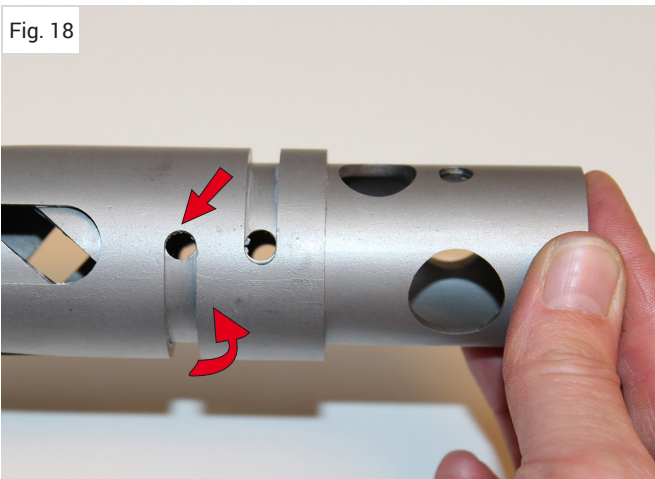
Remove the old "holder with finger" from the tool.

Fig. 17



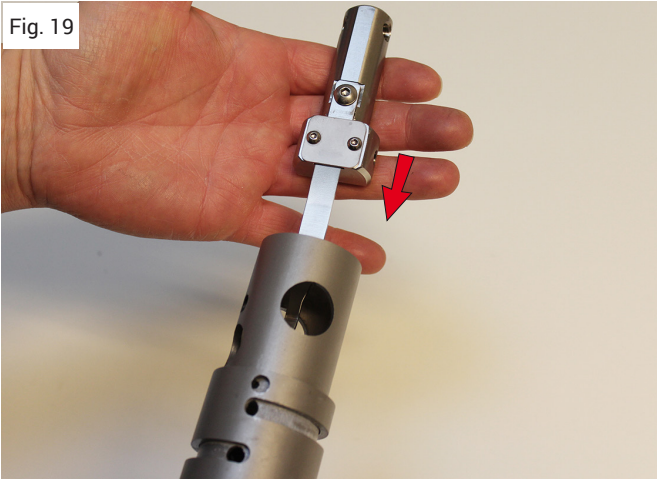
Align the holes.

Fig. 18

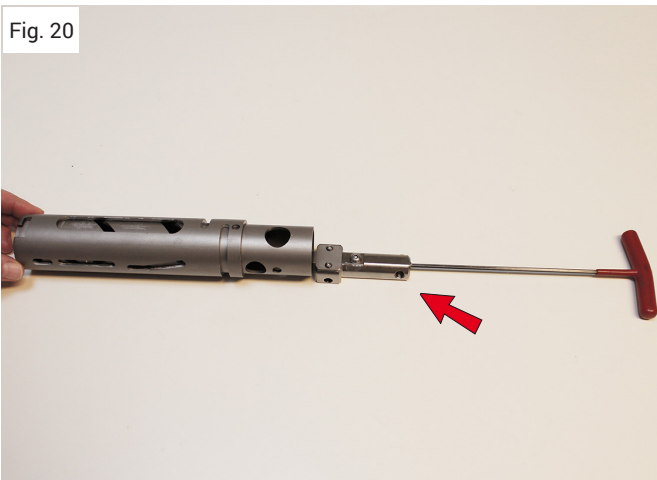


Turn the tool anti-clock wise 180°.

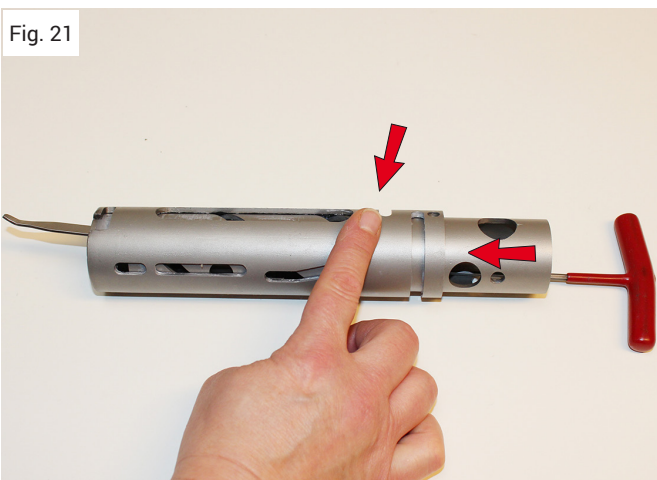
HOLDER AND FINGER



Put in the new "holder with finger".



Mount the Allen key on the "holder with finger".



Slide-in the "holder with finger" and place it in the square hole.

FOR TOOL 941-094

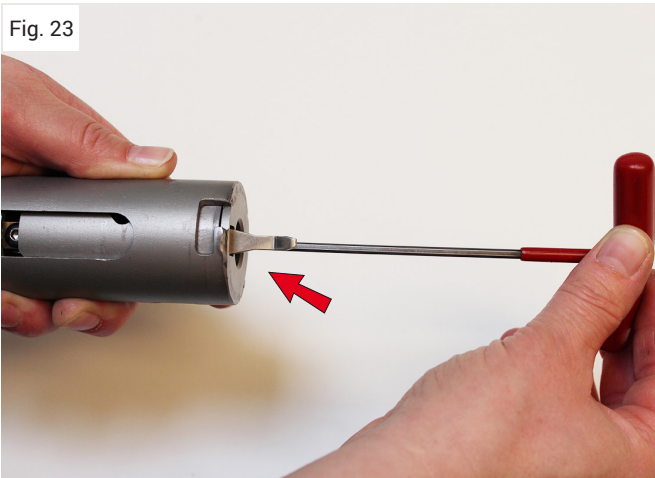
HOLDER AND FINGER

Fig. 22



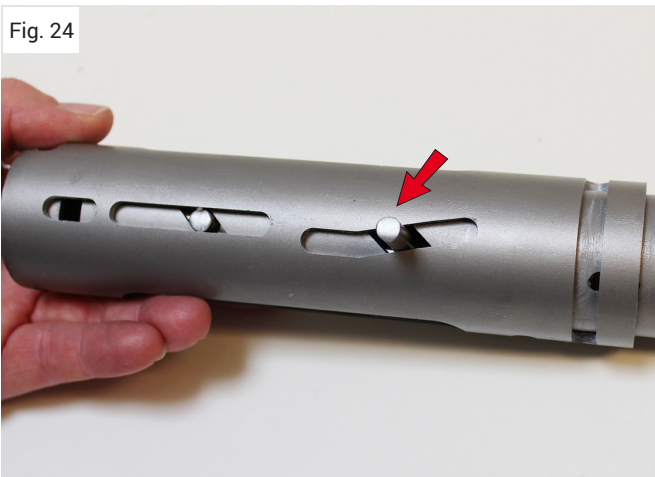
Insert the 5th pin. (xxx mm long)
(You are still having the Allen key in the "holder with finger").

Fig. 23



Tighten the set screw.

Fig. 24

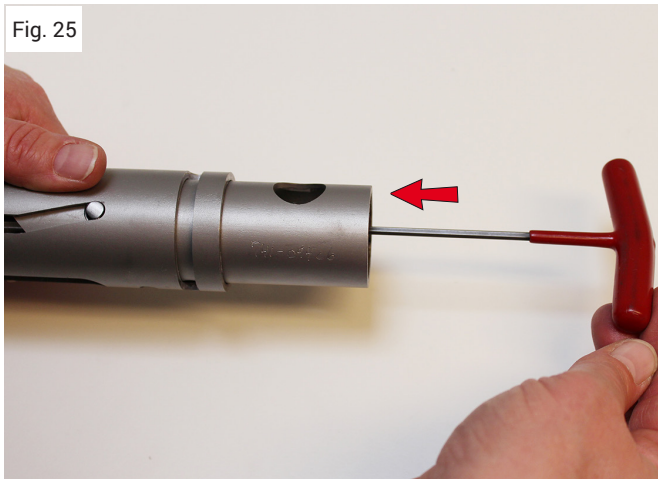


Place the 4th pin. (xxx mm long).

FOR TOOL 941-094

HOLDER AND FINGER

Fig. 25



Tighten the set screw.

Fig. 26



Put in the venting tap.

Fig. 27

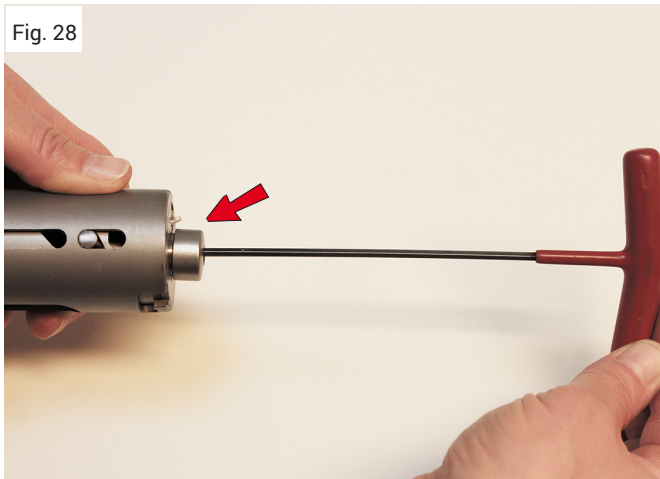


Place the 3rd pin.

FOR TOOL 941-094

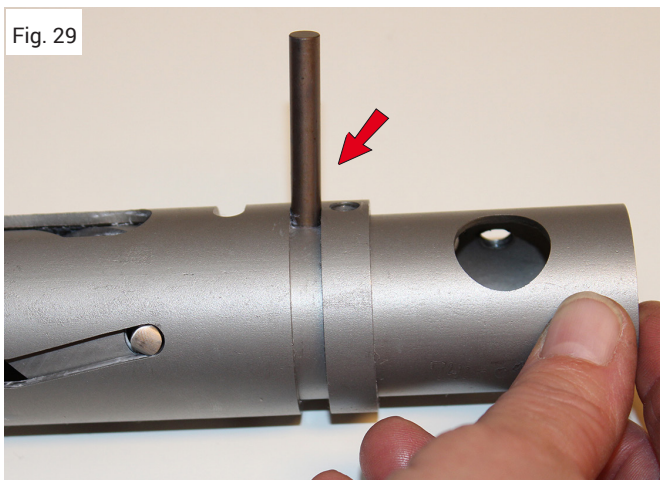
HOLDER AND FINGER

Fig. 28



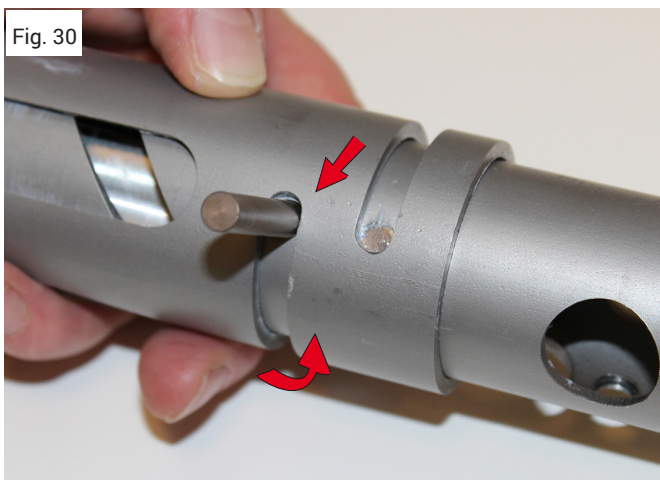
Tighten the set screw.

Fig. 29



Place the 2nd pin in the first hole.

Fig. 30



Turn the tool anti-clock wise 180° and place the 1st pin in the second hole.

FOR TOOL 941-094

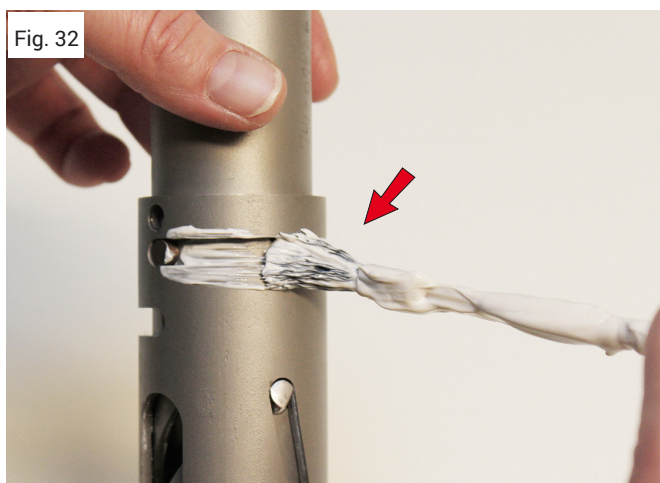
HOLDER AND FINGER

Fig. 31



Recommended grease.

Fig. 32



Grease all grooves and pin holes.

Fig. 33

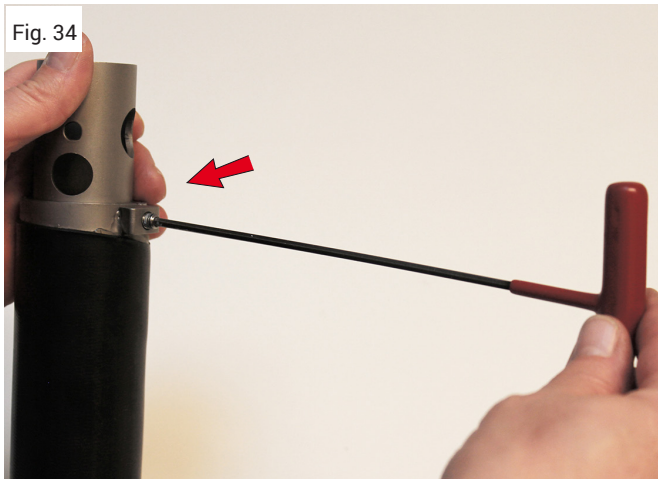


Slide in the outer tube.

FOR TOOL 941-094

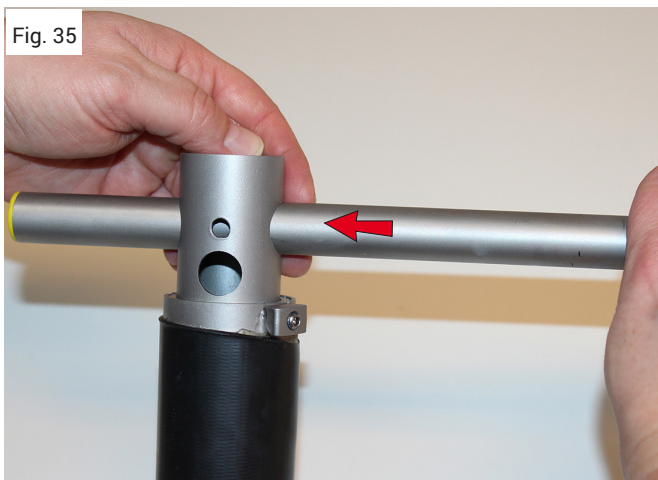
HOLDER AND FINGER

Fig. 34



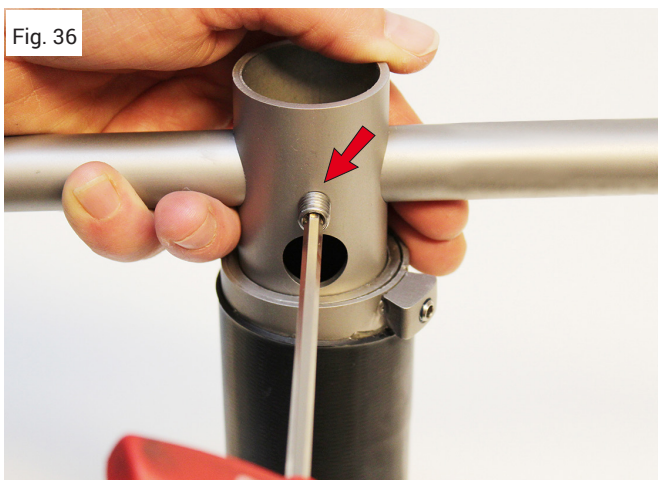
Tighten the set screw.

Fig. 35



Slide in the handle bar.

Fig. 36



Tighten the set screw.

FOR TOOL 941-094

HOLDER AND FINGER

Fig. 37

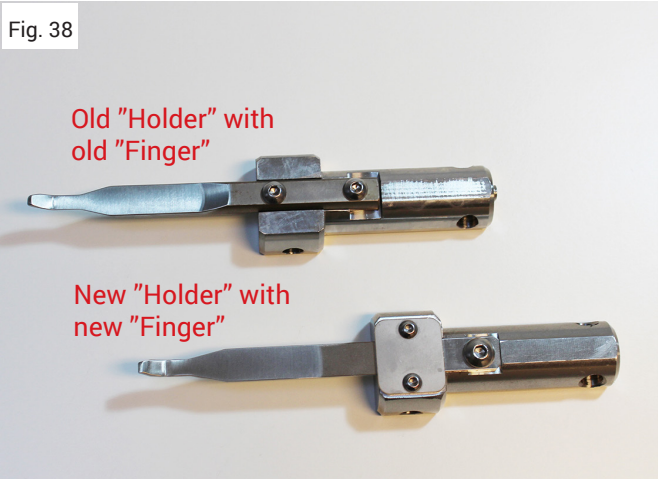


Put on the plastic plug.

FOR TOOL 941-094

FINGER

REPLACING OF "FINGER" FOR SERVICE TOOL



Release the set screw.



Pull off the outer tube.

FOR TOOL 941-094

FINGER



Turn the inner tube so the two screws are visible and unscrew them both.



Pull out the "Finger".



The tool is ready to have its "Finger" replaced.

FOR TOOL 941-094

FINGER



Insert the new "Finger".



Turn the inner tube so the two screws are visible and in-screw both.



Put on outer tube.

FOR TOOL 941-094

FINGER

Fig. 47



In-screw the set screw.

NOTES

